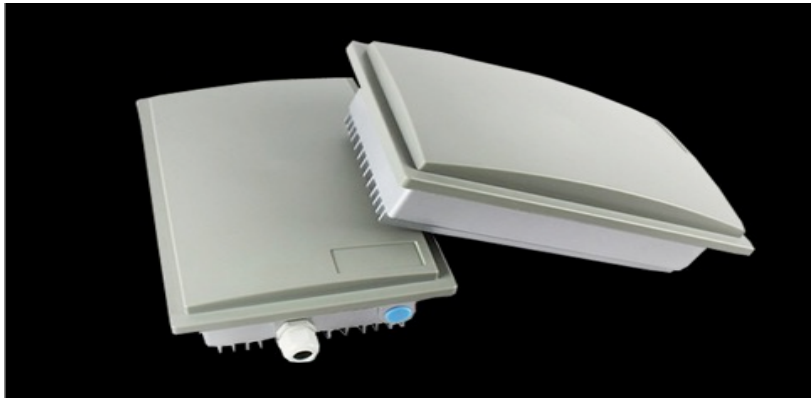


Designed both for indoor and outdoor large-area extended coverage, operating in the 2.4GHz band. Built-in high-power PA amplifier and MIMO antenna interfaces can be connected with omnidirectional high-gain antenna, directional panel antenna. Multiple operating modes: Gateway, Relay, AP - to create a variety of wireless networks on demand.



NEC PARAMETERS

- Outdoor housing design with built-in high gain directional antenna
- Built-in 64MB memory + 8MB flash memory for higher performance
- High power wireless output, external MIMO antenna interface for greater transmission distance
- Support 2.4GHz 11N technology
- 300Mbps wireless transmission rate
- Multiple operating modes: Gateway, Relay, AP; adapt to build a variety of wireless networks
- Built-in high gain directional antenna
- 2.4-2.48GHz
- MIMO Operation
- 128° degree coverage
- Distance reach of up to 300 meters

Standards

- IEEE 802.11n
- IEEE 802.11g
- IEEE 802.11b

Transmit Power

- 11n MCS7: 26±1dBm
- 11g 54Mbps: 26±1dBm
- 11b 11Mbps: 27±1dBm

Receive Sensitivity

- 11N MCS0@-83dBm
 - MCS7@-65dBm
- 11G 54Mbps@-82dBm
- 11B 6Mbps@-95dBm
 - 11Mbps@-85dBm
 - 1Mbps@-95dBm

Security

- 64/128-bit WEP
- WPA/WPA2
- WPA /WPA2-Personal (TKIP/AES)

Power Supply

- Self-supporting 24V PoE net, supporting 60m network cable power supply